

# CONNECTIONS



*Living Water*  
Lutheran Church



October 5, 2025



*The word of the Lord  
endures forever.*

*1 Peter 1:25*

Sunday Worship Service is at 10:00am  
on-site and online

Weekly CONNECTIONS Deadline—\*Tuesdays at NOON\*

# *We Remember in Our Prayers*

- o Amanda (Daughter of Cherrie Heidemann-Oglesby)—Health Concerns
- o Jeff & Eric Bemby (Friends of Diane vanMaanen)—Health Concerns
- o Barbara Brooks—Health Concerns
- o Lizzy Caddow (Friend of Diane Salinas)—Cancer
- o Christi (Daughter of Charlie and Sue Boyd)—Health Concerns
- o Debbie Connor (Friend of Frances DeBruyn)—Terminal Melanoma
- o Adrian Corr (Brother-in-law of Brian Goebel, living in Turks)—Cancer
- o Katie Dawson (Daughter of Tod and Bonnie Dawson)—Health Concerns
- o Angelika Dumpf (Wife of Brett Stone)—Health Concerns
- o Danica Enlow (Daughter-in-law of Leila Burrus)—Recovering From Surgery
- o Jenna Fjeld—Health Concerns
- o Dave and Joy Gallimore—Health Concerns
- o Frank Gasparino—Health Concerns
- o Kyle and Tyler Hornacek (Grandsons of John and Sue Hornacek)—Life Concerns
- o John (Friend of Diane vanMaanen)
- o Tom Kelland—Health Concerns
- o Pr. Robert and Pat Klein (Friends of Donna and Darnell Pettengill)—Health Concerns
- o Cherrie Oglesby—Health Concerns
- o Gene Perry—Health Concerns
- o Shirley Perry—Health Concerns
- o Jana Richter (Family Member of Henri & Lynda Breault)—Health Concerns
- o Kathy Roegnik—Health Concerns
- o Del Rogge—Heart Concerns
- o Georgia Self (Sister of Frances DeBruyn)—Health Concerns
- o Regan Shea (Friend of Pastor Mark)—Health Concerns
- o Kristen Stenehjerm (Niece of Sue and Lee Stenehjerm)—Health Concerns
- o Janet L. Swim (Sister of Brian Goebel)—Cancer
- o Bob Ulland—Health Concerns
- o Michael Umland (Son of Steve & Sue Umland)—Health Concerns
- o Peter Vasiliades (Nephew of Rick Sherrin)—Health Concerns
- o Pr. Brian Weinberger (Bethlehem Lutheran in Mesa)—Recovering from  
an auto accident

*Send your prayer requests to [prayer@lwlcaz.org](mailto:prayer@lwlcaz.org) or fill out a card in the Narthex.*

*\*If it is time to remove someone from the prayer list, please contact the front office.*

# Men's Bible Breakfast

We meet on Thursdays at **8:00am**

**Spirit in the Desert Retreat Center**

**7415 East Elbow Bend Rd.**

**Carefree, AZ 85377**

**\$8 for breakfast**

## **Dennis Nelson Bible Study**

Studies available on YouTube each **Wednesday**

*Weekly, published on our YouTube Channel*

*Wednesdays at NOON*

*Bible Study Outlines available on  
our website: **lwlcaz.org***

### *Prayer of the Week:*

Benevolent, merciful God: When we are empty, fill us. When we are weak in faith, strengthen us. When we are cold in love, warm us, that with fervor we may love our neighbors and serve them for the sake of your Son, Jesus Christ, our Savior and Lord.  
Amen.





## Lutheran World Relief (LWR) Quilt and Kit Blessing Sunday

Today we are blessing 93 quilts made by our Piecemakers Quilting Ministry during the

past year. We're also blessing 101 Personal Care Kits that were contributed through generous donations from the congregation during this year's Lenten season. A Thrivent Action Team grant helped us purchase additional items for the personal care kits. Our Family Sunday School students assembled the personal care kits in May. The quilts and kits will be delivered to a LWR Phoenix area "in-gathering" in Glendale later this month. From there, they'll be on their way to one of the two LWR warehouses in the U.S. (St. Paul, MN or Baltimore, MD) to be repackaged for shipment through LWR's global connections. Eventually they will become tangible ways to express love to our neighbors in need.

**Helping with shipping costs:** You can help LWR get our quilts and kits shipped to their final destinations by making a donation in the envelopes pinned to quilts in the sanctuary. Please do not remove the envelope from the quilt! LWR estimates the shipping cost for a quilt is \$2.80; for a Personal Care Kit it's \$1.50. We also need funds to pay a moving company to transport our quilts/kits to Glendale for the LWR pick up. All totaled, we estimate we need \$800. If you're writing a check, please note in the memo line "LWR Shipping." Anything above \$800 will be directed to the Piecemakers Quilting ministry to purchase batting and other needed supplies. You can also give directly through <https://lwr.org/donate/shippingfund>

Thank you to everyone at Living Water for supporting these two important ministries of Lutheran World Relief.

# Reformation Potluck Luncheon



Sunday, October 26  
Following Service

**If you enjoy good food, laughter and  
the convivial company of friends...**

Please bring your favorite dish – a main, side or dessert – to share at a good old-fashioned Lutheran Potluck in celebration of Reformation Day. Coffee & tea will be served, and you may bring a beverage of your choice – soft drink, beer or wine. Activities will be available for children.

Sign-up will be in the Narthex, beginning Sunday, September 28. For questions, please call Diane Klumpp at 406-224-0612 or Linda Hoenig at 480-766-0816. **All are welcome!**





**Get ready for Living Water's  
DO MORE campaign to Expand our Mission.**

Imagine what we can do if the burden is lifted! How  
will we serve once the door is open?

OPEN THE DOORS



**DO MORE**

On November 16<sup>th</sup>, we will have the opportunity to turn in our  
Statements of Intent for the 2026 Annual Stewardship  
Campaign and the 3-year *Open the Doors, Do More*  
Campaign.

# 2026 YOUTH MISSION TRIP

## Harrisburg, Pennsylvania



When: July 19-24

Who: Youth in grades 6-12

Cost: \$400 + help with fundraisers

Deadline to register with \$100 deposit: November 1

Pennsylvania's capital, Harrisburg, is home to Hershey's Chocolate, City Island and Broad Street Market. Not only does the city have a rich history for its role in the Civil War and Industrial Revolution but it also continues to be a small city with plenty of outdoor activities, arts and tourism. However, despite multiple efforts to recover from economic challenges, in 2011, the city filed for bankruptcy. Since then, the city has made strides to bring resources back to the community. By supporting community efforts to improve the city through redeveloping local parks, community gardens, food banks, thrift stores and local ministries, the work that happens in Harrisburg provides a direct impact on the challenges experienced by the city's residents. During your time in Harrisburg, you will get to learn from and serve with local organizations like Harrisburg Parks and Rec, Boys and Girls Club, food banks and other nonprofit and social service agencies meeting tangible needs. Also, at several partnerships in Harrisburg, we work in community gardens and parks, doing yardwork projects, pulling weeds and trimming bushes.

If you have any questions, see Pastor Shari: [pastorshari@lwlcaz.org](mailto:pastorshari@lwlcaz.org)



## Living Water Lutheran Church

### Mid Year Financial Review – June 2025

*Living Water*  
Lutheran Church



On June 30, 2025, the book balance of our cash was \$435,838. The balances were \$44,209 at Wells Fargo, \$381,632 at Schwab (4.01% yield currently) and \$9,997 at the ELCA Mission Investment Fund.

The balance due on the mortgage on June 30, 2025 was \$1,008,155 (@ 3.875%).

Financial results through June 20, 2025 were well off budget. The combined general and mortgage fund had a loss of \$7,641 for the six months ended June 30, \$54,256 unfavorable to budget. The YTD loss was dramatically worse than the first six-month results of 2024. 2024's YTD June results were favorably impacted the timing of painting and tree trimming offerings and the related expenses, which were largely incurred after the offerings were received.

Offerings of \$451,694 through June 30 were below budget YTD by \$47,955. Offerings were spread by month in the budget based on the average timing of the last 5 years, but the timing of actual receipts can vary materially based on church members' situations. June YTD offerings were about \$56,000 less than last year. Interest income of \$6,713 has been recorded through June 30, \$1,425 higher than was budgeted.

YTD Expenses of \$472,951 were \$3,570 above budget, largely related to higher costs related to the 25<sup>th</sup> Anniversary celebration (\$7,896) and the Synod Assembly (\$1,694). These unfavorable variances were offset by Facilities costs being \$2,377 less than budget. So, for the most part, expenses have been well managed.

The July budgeted offerings are \$58,145. Offerings of approximately \$27,000 were received in July. So, it appears that the unfavorable variance to budget will grow considerably through the end of July.

Please keep an eye out for mid-year giving statements, which will arrive via email or snail mail. If you have concerns, please email the LWLC Finance Manager, Stephanie McLean at [smclean@lwlcaz.org](mailto:smclean@lwlcaz.org) or LWLC Treasurer, Steve Umland at [steveumland@gmail.com](mailto:steveumland@gmail.com).

We continue to work with the IRS on our tax issues (payroll withholding issues from 2021 and Employee Retention Credit filing). We have recently enlisted the assistance of Congressman Schweichert's office to help resolve these long-standing issues.



© 2008 The Authors  
Journal compilation © 2008 British Ecological Society, *Journal of Animal Ecology*, 78, 105–114

# New Member Class

Saturday October 18th from 4:00 to 6:00pm.

Are you curious about **membership** at  
Living Water Lutheran Church?



If so, we would love for you to join us for an informative  
Orientation and dinner to learn more about Living Water  
followed by dinner  
on **Saturday October 18 from 4:00 to 6:00pm.**

If **you** would like to attend, please **rsvp** via the  
front office:

via phone: **480-473-8400**

or

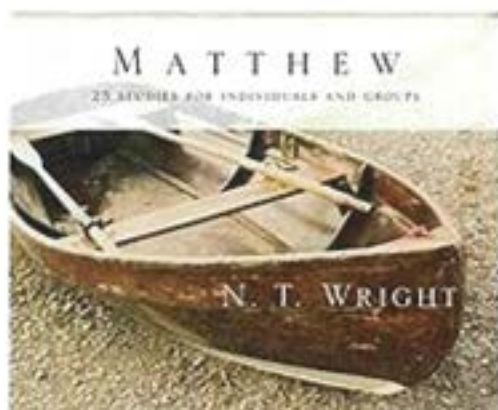
email: **office@lwlcaz.org**

use subject: 'New Member Orientation'

## New Member Class on 10/18



*Today's altar flowers were donated by  
Frances and Mike DeBryun  
to wish a happy birthday  
to their niece-in-law Leslie*



## **Tuesday Women's Bible Study**

### **Resumes our 2025 Fall Schedule**

Join us on any Tuesday morning at 10 am MST in the Fellowship Hall, or at 10 am MST via Zoom, to continue our study of the Gospel of Matthew. We're still using material from New

Testament scholar, N.T. Wright. We have 8 more weeks to finish this deep dive into this Gospel!

No prior knowledge of the Bible is needed, and you don't have to be Lutheran either. Come when you can, bring a friend, and bring your favorite Bible translation. We include prayers in our time together, prayers for those on our church's prayer list as well as individual prayers offered during our time together. The coffee and hot water for tea/hot chocolate will always be on. Occasionally we have a little treat. We meet for approximately 90 minutes on Tuesday mornings and often go to lunch as a group on the last Tuesday of each month. If you're not receiving our Tuesday Women email communications, please notify [myrna.ulland@gmail.com](mailto:myrna.ulland@gmail.com) to be added.

# Sunday Morning Adult Forum

9 AM – Music Room (second floor of Education Building)

## HARDER THAN HERDING CATS

Five Week Study on the Life of Moses led by Pastor Dennis D. Nelson

Begins October 12 and then continues every other week

It's been said that leadership is like herding cats. For Moses leading the Israelites for forty years through the wilderness was harder than herding cats. How did he have the strength, patience, and sustenance to lead a huge group of people who were constantly complaining, ready to stone him, bored with their food, and continually criticizing him for bringing them out of the bondage that they now want to return to? There is much we can learn from the life of Moses – from the circumstances of his birth to his ultimately not being able to lead the Israelites all the way into the Promised Land.

## Piecemakers Quilters

**Next Session: October 15**



Join us each month to tie mission quilts for Lutheran World Relief (LWR) for a few hours each month. We meet at 9 am and conclude between 11:30 and noon.

No experience required! You'll find us in the Education Building – Matthew/Mark or the Martha Room. Bring your coffee/tea for a mid-morning break.

If you like to sew and are looking for some small projects, we always have quilt tops ready to be assembled. 12 to 16 pieces, using ½" seams. Assemble at your leisure! Ask Lynda Cales, Kay Bonar, Mary Nyberg or Myrna Ulland. You can also learn more about this ministry at [www.lwr.org/quilts-and-kits](http://www.lwr.org/quilts-and-kits)



## Living Water's "Hunger Jar"



The large Hunger Jar is in the sanctuary during services, to the right of the water fountain. Offerings placed in the Hunger Jar are typically distributed 50/50 between local and international/global organizations or initiatives.

The Service and Caring Team Ministry at LWLC periodically determines how to distribute offerings to the Hunger Jar. Most recently, we split the 6/30/25 balance of \$ 1,870. We still allocated 50% locally but split it between three local organizations, St. Mary's Food Bank of Arizona and ELCA, Nourish Phx and Foothills Foodbank. Each received \$312. The 50% for

the international portion was split between Lutheran World Hunger and Save My Starving Children. Each received \$467.

You are invited to make an offering to the Hunger Jar while the offering is being collected during the worship service. While the jar's tag line says, "Change for Change," your offering can be coins, bills, and even checks. And, if you prefer, you can donate through LWLC's online donation option and indicate "Hunger Jar."

From time to time, you may also see smaller Hunger Jar collection jars elsewhere in the church as we gather for worship. Each offering placed in the Hunger Jar is a reminder that our hungry neighbors, near and far, benefit from our generosity. Thank you!



*You are cordially invited to attend the*

**Grand Canyon Synod Women of the ELCA**  
**Biennial Convention/Gathering**

**Saturday, November 8, 2025**

**Faith/La Fe Lutheran Church**

801 East Camelback Road Phoenix, Arizona 85014

*We will come together building relationships, across the synod,  
across the country and around the world!*



Special guests will include:

**Myrna Wells-Ulland**, *President of Churchwide Women of the ELCA*

**Pastor Jacqui Pagel**, *Bishop's Associate for Candidacy & Faith Formation*

**Connie Phillips**, *CEO & President of Lutheran Social Services of the Southwest*

**Registration will open soon!**

**Mark your calendars!**

**Choose the Voting Member for your  
Congregational Unit!**

**Watch for more information to come!**



# 2025 FALL INGATHERING SEASON

## ARIZONA AREA

We are so grateful for our **Quilters and Kit Makers!** Your compassionate service is at the very heart of Lutheran World Relief. Your faith in action brings hope and comfort to those in need and creates a lasting impact for our neighbors, no matter how far.

In 2024, your love stitched more than 370,000 quilts, bundled nearly 320,000 kits, and embraced countless families in 16 countries, including the United States.

Your gifts have surrounded those suffering unimaginable loss after disaster in the U.S. They have ensured new mothers in Madagascar can clothe and care for their babies, and that the education of children in Honduras isn't disrupted by a simple lack of supplies.

You are a **beacon of hope** to our **most vulnerable neighbors**, shining **God's light** in a world of increasing need.

**THANK YOU!**



### UPCOMING INGATHERINGS NEAR YOU

With the Fall Ingathering season approaching quickly, here is some important logistical information:

#### STREAMS IN THE DESERT LUTHERAN CHURCH

5360 E. Pima St., Tucson, AZ 85712

##### COLLECTION DATES:

Friday-Saturday, Oct 3-4, 9am-noon

##### CONTACT:

Janis Richert

520.419.5938 (cell)

azrichert@comcast.net

*If different drop day appointment is needed -  
please call Janis before October 3rd*

#### ATONEMENT LUTHERAN CHURCH

4001 W. Beardsley Rd., Glendale, AZ 85308

##### COLLECTION DATES:

Friday-Saturday, Oct 17-18, 9am-noon

##### CONTACTS:

Church office

623.582.8785

church@atonementlc.org

Ellen Born

602.316.5790 (cell)

bomblessed2@icloud.com

#### INGATHERING MAP

You can also check the **INGATHERING MAP** at [ingathering.lwr.org](http://ingathering.lwr.org) for the closest location. No ingathering near you? No problem! You can drive or ship your items to our warehouse:

**Lutheran World Relief**  
398 East Richmond Street  
South St. Paul, MN 55075  
651.457.9009

#### ITEMS ACCEPTED

Quilts, School Kits, Personal Care Kits, Baby Care Kits and Fabric Kits. For **general assembly** instructions, go to [lwr.org/quilts](http://lwr.org/quilts) or [lwr.org/kits](http://lwr.org/kits).

#### PACKING NOTES

Pack your items **TIGHTLY** in medium-size strong boxes secured with packing tape. This ensures boxes do not collapse during transit. Each box cannot exceed 40 lbs. Pack completed quilts and kits **SEPARATELY** in boxes.

#### LABELING YOUR BOXES

Create your own label OR write on your boxes in **LARGE, BLOCK LETTERS** with LWR, church information, type and number of contents.

For more detailed packing instructions and label requirements, go to [lwr.org/pack](http://lwr.org/pack).

**LUTHERAN WORLD RELIEF**  
Church or Group Name  
Church or Group Address  
Type and Quantity of Item

Still have questions? Contact the Quilt & Kit Ministry team at [quiltsandkits@lwr.org](mailto:quiltsandkits@lwr.org).



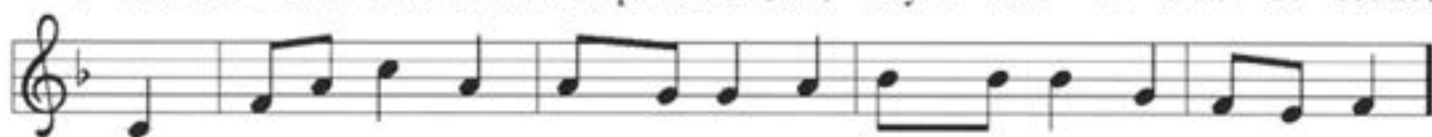
**LUTHERAN WORLD RELIEF**

[ingathering.lwr.org](http://ingathering.lwr.org)

## Gathering Hymn... "My Hope Is Built On Nothing Less"



- 1 My hope is built on noth-ing less than Je-sus' blood and righ-teous-ness;
- 2 When dark-ness veils his love-ly face, I rest on his un - chang-ing grace;
- 3 His oath, his cov - e - nant, his blood sus - tain me in the rag - ing flood;
- 4 When he shall come with trum-pet sound, oh, may I then in him be found,



no mer-it of my own I claim, but whol - ly lean on Je - sus' name.  
in ev - 'ry high and storm - y gale my an - chor holds with-in the veil.  
when all sup-ports are washed a-way, he then is all my hope and stay.  
clothed in his righ-teous-ness a-lone, re - deemed to stand be - fore the throne!

*Refrain*



On Christ, the sol - id rock, I stand; all oth - er ground is



sink - ing sand, all oth - er ground is sink - ing sand.

Text: Edward Mote, 1797–1874, alt.

Music: THE SOLID ROCK, William B. Bradbury, 1816–1868



## Psalm 37: They Will Delight In Abundance

### *Refrain*



2 Do not be provoked by evil doers; do not be jealous of those who do wrong.  
Refrain.

3 For they shall soon wither and like the green grass fade away. Put your trust in the Lord and do good;  
Refrain.

4 Take delight in the Lord, who shall give you your heart's desire. Commit your way to the Lord; put your trust in the Lord.  
Refrain.

Thank you for your generosity. Your generosity makes a difference and is helping change lives. Thank you for believing in the mission of Living Water and helping us to continue our ministry.

If you are looking for an easy way to give a financial gift via your phone, see QR code below to access Living Water's online giving platform.

*Thank  
You*



## Sermon Hymn... "Great Is Thy Faithfulness"



1 Great is thy faith - ful - ness, O God my Fa - ther; there is no  
2 Sum - mer and win - ter and spring - time and har - vest, sun, moon, and  
3 Par - don for sin and a peace that en - dur - eth, thine own dear



shad - ow of turn - ing with thee; thou chang - est not, thy com -  
stars in their cours - es a - bove join with all na - ture in  
pres - ence to cheer and to guide; strength for to - day and bright



pas - sions they fail not; as thou hast been, thou for - ev - er wilt be.  
man - i - fold wit - ness to thy great faith - ful - ness, mer - cy, and love.  
hope for to - mor - row, bless - ings all mine, with ten thou - sand be - side!

### *Refrain*



Great is thy faith - ful - ness! Great is thy faith - ful - ness! Morn - ing by



morn - ing new mer - cies I see; all I have need - ed thy



hand hath pro - vid - ed; great is thy faith - ful - ness, Lord, un - to me.

Text: Thomas O. Chisholm, 1866–1960

Music: FAITHFULNESS, William M. Runyan, 1870–1957

Text and music © 1923, ren. 1951 Hope Publishing Company, Carol Stream, IL 60188. All rights reserved. Used by permission.



## Sending Hymn... "Go, My Children, With My Blessing"



1 "Go, my chil - dren, with my bless - ing, nev - er a - lone.  
 2 "Go, my chil - dren, sins for - giv - en, at peace and pure.  
 3 "Go, my chil - dren, fed and nour - ished, clos - er to me.



Wak - ing, sleep - ing, I am with you, you are my own.  
 Here you learned how much I love you, what I can cure.  
 Grow in love and love by serv - ing, joy - ful and free.



In my love's bap - tis - mal riv - er I have made you mine for - ev - er.  
 Here you heard my dear Son's sto - ry, here you touched him, saw his glo - ry.  
 Here my Spir - it's pow - er filled you, here my ten - der com - fort stilled you.



Go, my chil - dren, with my bless - ing, you are my own."  
 Go, my chil - dren, sins for - giv - en, at peace and pure."  
 Go, my chil - dren, fed and nour - ished, joy - ful and free."

Text: Jaroslav J. Vajda, b. 1919, alt.  
 Music: AR HYD Y NOS. Welsh traditional  
 Text © 1983 Concordia Publishing House

# LIVING WATER

**Purpose Statement: "To Be and Make Disciples of Jesus Christ."**

**Living Water is a congregation of the Evangelical Lutheran Church in America, Grand Canyon Synod and Northeast Valley Conference.**

The Living Water  
QR code for giving:



Ministers: All the members of Living Water

Pastor: Mark Rossman  
PastorMark@lwlcaz.org

*Living Water*  
Lutheran Church



Pastor: Shari Bernau  
PastorShari@lwlcaz.org

Office/Communications Manager: Jennifer Kelsh  
jkelsh@lwlcaz.org

Finance Manager: Stephanie McLean  
smclean@lwlcaz.org

Director of Music: Christina Hall  
chall@lwlcaz.org

Associate Director of Music: Scott Sims  
ssims@lwlcaz.org

In case of Pastoral Emergency, please call Pastor Mark at 973-699-7777 (mobile)

## **Publication Deadlines:**

Connections- Every Tuesday by noon  
SPLASH! - The 20th of each month by noon

Living Water Lutheran Church

9201 E. Happy Valley Rd, Scottsdale, AZ 85255

office@lwlcaz.org ~ www.LWLC.AZ.org

~ 480.473.8400 ~

**LAST WEEK'S 10:00AM SERVICE ATTENDANCE ON SEPTEMBER 28: 104**