

CONNECTIONS



Living Water
Lutheran Church



February 16, 2025



Weekly CONNECTIONS Deadline—*Tuesdays at NOON*

Sunday Worship Service is at 10:00am
on-site and online

We Remember in Our Prayers

- ALL impacted by the Los Angeles, CA Wildfires
- Jeff & Eric Bemby (friends of Diane vanMaanen)—Health Concerns
- Pastor Shari Bernau—Hand Surgery Recovery
- Charlie Boyd—Health Concerns
- Terry Brooke (Daughter of Maria Tillotson)—Health Concerns
- Barbara Brooks—Health Concerns
- Lizzy Caddow (Friend of Diane Salinas)—Cancer
- Christi (Daughter of Charlie and Sue Boyd)—Health Concerns
- Pastor Michael Dubsky (friend of Frances DeBruyn)—Health Concerns
- Angelika Dumpf (Wife of Brett Stone)—Health Concerns
- Sheila Fankhauser—Back Surgery
- Jenna Fjeld—Health Concerns
- Dave and Joy Gallimore—Health Concerns
- Frank Gasparino—Health Concerns
- Vicki Grimsley (Mother of Mason Rossman)—Cancer
- Tyler Hornacek (Grandson of John and Sue Hornacek)—Life Concerns
- Mark Jacobson (brother of Lance Jacobson)—Health Concerns
- Dick Johnston—Health Concerns
- Kristin Klarkowski—Health Concerns
- Tom Kelland—Health Concerns
- Michael Koch (Grandson of Ron & Shirley Koch)—Health Concerns
- Gabriele Laudenschlager—Health Concerns
- Don Martin (Friend of Ron and Karen Roessler)—Health Concerns
- Betty McCarthy (Sister of Stephen McCarthy)—Health Concerns
- Prentice Powers (Marty Lindert's brother)—Health Concerns
- Rebecca (Melissa Freesh's sister)—Health Concerns
- Bonnie Roberts—Life Concerns
- Kathie Roegnik—Health Concerns
- Del Rogge—Heart Concerns
- Pastor Mark Rossman—Health Concerns
- Ruth Schlesinger—Health Concern
- Bob Ulland—Health Concerns
- Michael Umland (Son of Steve & Sue Umland)—Health Concerns
- Peter Vasiliades (Nephew of Rick Sherrin)—Health Concerns
- Family and Friends of David Cales (Brother of Gerry Cales)
- Family and Friends of Mark Jacobson (brother of Lance Jacobson)
- Family and Friends of Pam Landon
- Family and Friends of Maria Tillotson

Send your prayer requests to prayer@lwlcaz.org or fill out a card in the Narthex.

**If it is time to remove someone from the prayer list, please contact the front office.*

Men's Bible Breakfast

We meet on Thursdays at **8:00am**
Spirit in the Desert Retreat Center
7415 East Elbow Bend Rd.
Carefree, AZ 85377

\$8 for breakfast

Dennis Nelson Bible Study

Studies available on YouTube each **Wednesday**

Weekly, published on our YouTube Channel

Wednesdays at NOON

Bible Study Outlines available on

*our website: **lwlc az.org***

With One Simple Choice, You Can Do Amazing Things

There is a simple way to make sure what your love lasts — and it's easier than you may think. Creating a **beneficiary designation gift** is speedy and does not cost you anything now. Instead, it allows you to take savings you have accrued over time and put it to good use.

All it takes is a few minutes and a simple form to complete your gift. And you may even be able to change your beneficiary designation online. Completing that quick task can result in transformative change for Living Water and our ministries when making a gift to the church or through the Living Water Endowment Fund.

The following assets allow you to designate a beneficiary or beneficiaries:

- Retirement plans
- Individual retirement accounts (IRAs)
- Life insurance policies
- Donor advised funds
- Bank or brokerage accounts

Remember, your beneficiary designations don't have to be all or nothing. You can give a percentage of an asset to Living Water Lutheran Church or our Endowment Fund, with the rest going to loved ones or other worthy nonprofits.

The legacy you leave behind can make good things happen for years into the future. The options are as endless as your generosity.

Did You Know...

If you leave your retirement plan or IRA to a person, they will lose a portion to federal income taxes. Nonprofit organizations such as Living Water Lutheran Church or our Endowment Fund won't be charged taxes. We can put the *entire* amount of your gift to good use.

How do you get more information?

If supporting Living Water Lutheran Church and our ministries into the future, our partner, Lisa Maria Higginbotham at the ELCA Foundation can help you find a gift option that makes sense for you. Contact Lisa by email at lisa.higginbotham@elca.org or by phone at (773) 380-2477 for no-obligation help.



Tuesday Women's Bible Study

Join us on any Tuesday morning at 10 am in the Fellowship Hall, or at 10 am via Zoom, to continue our study of the Gospel of Matthew. We're using material from New Testament scholar, N.T. Wright.

No prior knowledge of the Bible is needed, and you don't have to be Lutheran either. Come as you can, bring a friend and your favorite Bible

translation. The coffee and hot water for tea/hot chocolate will always be on. Occasionally we also have a little treat. We meet for approximately 90 minutes on Tuesday mornings. If you're not receiving our Tuesday Women email communications, please notify [myrna.ulland@gmail](mailto:myrna.ulland@gmail.com) to be added. Our December schedule will be December 3rd through the 17th.



Deepen your connection to our Grand Canyon Synod

Sign up for the Synod Newsletter!

You are invited to subscribe to the Grand Canyon weekly synod e-newsletter. It arrives in your in-box every Friday morning at 8 a.m. The newsletter offers a wealth of stories from congregations and ministries within our synod, uplifting tales of faith in action, and insights into the work being done at the ground level within our broader church. The newsletter also brings you news from the partner ministries and organizations at the synod level, Region 2, the wider ELCA, and even updates from the global church, including Lutheran World Federation.

Be inspired by the work of others and help us weave a tighter fabric of community across our synod and beyond. Click one of the links below to subscribe:

[Get our newsletter — Grand Canyon Synod of the ELCA](#)

<https://www.gcsynod.org/newsletter>

REMINDER:

For on-line giving at Living Water please visit **LWLCaz.org**
and Click on "**Online Giving.**"

This will provide navigation for both new users to this method
and allow editing for current users to update their intentions
for 2025.

Living Water's "Hunger Jar"

The large Hunger Jar is in the sanctuary during services, to the right of the water fountain. Offerings placed in the Hunger Jar are typically distributed 50/50 between local and international/global organizations or initiatives.



The Service and Caring Team Ministry at LWLC periodically determines how to distribute offerings to the Hunger Jar. Most recently, we split the 12/31/24 balance of **\$1,899.00** between Foothills Food Bank and ELCA World Hunger. Each received \$944.50.

You are invited to make an offering to the Hunger Jar while the offering is being collected during the worship service. While the jar's tag line says, "Change for Change," your offering can be coins, bills, and even checks. And, if you prefer, you can donate through LWLC's online donation option and indicate "Hunger Jar."

From time to time, you may also see smaller Hunger Jar collection jars elsewhere in the church as we gather for worship. Each offering placed in the Hunger Jar is a reminder that our hungry neighbors, near and far, benefit from our generosity. Thank you!



New Member Class

Saturday March 8 from 4:00 to 6:00pm.

Are you curious about **membership** at
Living Water Lutheran Church?



If so, we would love for you to join us for an informative
Orientation and dinner learn more about Living Water
followed by dinner
on **Saturday March 8 from 4:00 to 6:00pm.**

If **you** would like to attend, please **rsvp** via the
front office:

via phone: **480-473-8400**

or

email: **office@lwlcaz.org**

(subject: New Member Orientation)

New Member Class on 3/8

Stand with Refugees

LSS - SW Statement on False Accusations

For generations, Lutherans have answered the call to serve our most vulnerable neighbors. That unwavering commitment remains at the heart of everything we do at Lutheran Social Services of the Southwest.

Since 1970, we have stood alongside refugees seeking safety, children and families in need, people experiencing homelessness, and older adults. Through strong public-private partnerships, we provide essential services that bring hope, stability, and dignity to those we serve.

False accusations recently surfaced on social media, alleging that Lutheran organizations misuse government funds. These claims are not just untrue, they disregard the decades of faithful service that Lutheran organizations like LSS-SW have provided. For over 50 years, we have welcomed legally admitted refugees, cared for the most vulnerable in our communities, and upheld the highest standards of accountability and transparency. The work we do is honest, necessary, and life changing.

We encourage you to help us combat this false narrative by sharing your support for our work to your congregation, colleagues, friends, family, and network.

Calling on congregations for your support

The combination of the stop-work-order and executive order has **cut off critical funding overnight**, leaving 130 families who have already arrived in Tucson and Phoenix in immediate jeopardy. There are currently 388 refugees within their first 90 days of arrival, who have been left behind. **You are their lifeline now.** These are families who have fled war, persecution, and unimaginable hardship, only to now face uncertainty in the very place they hoped to find refuge.

Here are the best ways your congregation can support these refugee neighbors:

- **Share information to dispel misunderstanding. See Talking Points handout.**
- **Collect needed items. See Donation flyer.**



REFUGEE CRISIS FUND DONATION NEEDS

LSS-SW has lost critical funding to help 388 refugees that recently arrived in Arizona. Your donation provides essential items to support these refugees.

CLEANING SUPPLIES

- Disinfectant Spray for Kitchen, Bathroom; Lysol Wipes
- Hand Soap, Dish Soap
- Broom, Dustpan
- Laundry Detergent

NON-PERISHABLE FOOD

- Flour, Sugar, Vegetable Oil, Black Tea Bags
- Basmati Rice
- Pasta and Sauce
- Canned Soup, Vegetables or Beans; Crackers, Cereal

HYGIENE SUPPLIES

- Toothpaste, Toothbrush
- Shampoo, Conditioner
- Body Wash, Bar Soap
- Deodorant
- Feminine Hygiene – Pads preferred
- Toilet Paper

GIFT CARDS – Visa, Frys, Walmart preferred; \$25 increments

COATS, UNDERWEAR, SOCKS, BRAS – All sizes

BABY ITEMS especially Diapers

Items can be dropped off at either of our office locations:

- Phoenix Office: 2502 E University Drive, Suite 125, 85034
- Tucson Office: 3364 E Grant Road, 85716

Please let us know if you are dropping off a donation by emailing:
donations@lss-sw.org

www.lss-sw.org/refugee-crisis-page

Blood Drive

Living Water Lutheran Church

Fellowship Hall
9201 E. Happy Valley Rd.
Scottsdale, AZ 85255

Wednesday, February 26, 2025
9:00 a.m. to 2:00 p.m.

For more information or to make an appointment,
please call the American Red Cross at 1(800) 733-2767
or log onto redcrossblood.org and use sponsor code: LivingWater



Scan to be directed to
RapidPass®

**Create a flurry of hope! Come give blood Jan. 27 to Feb.
28 for a \$15 e gift card rcblood.org/flurry**



Scan to schedule
an appointment.

LWLC BOOK DRIVE NEVER ENDS!

Yes, this project has received great summer support during Vacation Bible School. However, please note we have a Book Drive basket located in the narthex all year poised to serve the needs of Phoenix social service agencies. New or gently used books are made available to babies through adults.

As a reminder, cookbooks and magazines with recipes continue to be requested. The chapel at UMOM New Day Centers is especially grateful for religious publications for children (and also adults.)

(Questions? Contact Sue Brash, 602-317-9444, or suebrash7@gmail.com)



Piecemakers Quilting

Join us on February 19

Come and tie quilts with us! Our quilting primarily supports Lutheran World Relief (LWR), and we also make quilts for refugee families and our high school graduates. We meet on the first and third Wednesdays of the month, from 9 am to about noon, in the Education Building on the first floor. Bring your own water or coffee for a mid-morning

break. If you're a winter visitor who likes to quilt, come and tie with us. If you like to sew, we can provide pre-cut squares to make quilt tops. We also accept donations of 100% cotton appropriate for quilting work, as well as donations to purchase batting. Many hands make light work! Questions? Ask Lynda Cales, Kay Bonar, Mary Nyberg, Cindy Ophaug, Lois Lucas or Myrna Ulland. Learn more about this ministry at www.lwr.org

Open the Door to Do More



When I came to the city of Troas to preach the Good News of Christ, the Lord opened a door of opportunity to me.

II Corinthians 2:12

Living Water's 25th Anniversary

Sunday, April 27

10:00am Worship

5:00pm Dinner at Troon North Golf Club

\$50.00 per person

Reservations start Jan. 26 through February.

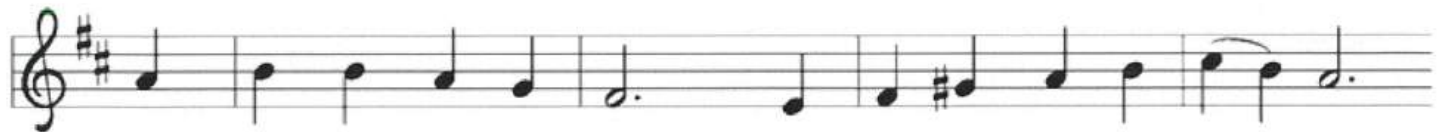
Reserve your spot today!

Reservations through February

Gathering Hymn... "Oh God, My Faithful God"



1 O God, my faith - ful God, true foun-tain ev - er flow - ing,
2 Give me the strength to do with read - y heart and will - ing
3 Keep me from say - ing words that lat - er need re - call - ing;
4 When dan - gers gath - er round, oh, keep me calm and fear - less;



with - out whom noth - ing is, all per - fect gifts be - stow - ing:
what - ev - er you com - mand, my call - ing here ful - fill - ing—
guard me, lest i - dle speech may from my lips be fall - ing;
help me to bear the cross when life seems dark and cheer - less;



give me a health - y frame, and may I have with - in
to do it when I ought, with all my might—and bless
but when, with - in my place, I must and ought to speak,
help me, as you have taught, to love both great and small,



a con - science free from blame, a soul un - stained by sin.
what - ev - er I have wrought, for you must give suc - cess.
then to my words give grace, lest I of - fend the weak.
and, by your Spir - it's might, to live at peace with all.

Text: Johann Heermann, 1585–1647; tr. Catherine Winkworth, 1827–1878, alt.
Music: WAS FRAG ICH NACH DER WELT. Ahasuerus Fritsch, 1629–1701

Psalm 1: 1-4, 6



1-2 Blessed the man who follows not the counsel [the counsel] of the wicked, nor walks in the way of sinners, nor sits in the company of the insolent, but delights in the law of the Lord and meditates on his law day and night. *Refrain.*

3 He is like a tree planted near [planted near] running water, that yields its fruit in due season, and whose leaves never fade. Whatever he does, prospers. [Whatever he does, prospers.] *Refrain.*

4, 6 Not so the wicked, not so; they are like chaff which the wind drives away, For the Lord watches over [watches over] the way of the just, but the way of the wicked vanishes. *Refrain.*

Sermon Hymn... "Let Justice Flow like Steams"



- 1 Let jus - tice flow like streams of spar-king wa - ter, pure,
- 2 Let righ - teous - ness roll on as oth - ers' cares we heed,
- 3 So may God's plumb line, straight, de - fine our mea - sure true,



en - a - bling growth, re - fresh - ing life, a - bun - dant, cleans-ing, sure.
an ev - er - flow - ing stream of faith trans - lat - ed in - to deed.
and jus - tice, right, and peace per - vade this world our whole life through.

Text: Jane Parker Huber, b. 1926

Music: ST. THOMAS, Aaron Williams, 1731-1776

Text © 1984 Jane Parker Huber, admin. Westminster John Knox Press

Sending Song... "We Know That Christ Is Raised"



1 We know that Christ is raised and dies no more.
2 We share by wa - ter in his sav - ing death.
3 The Fa - ther's splen - dor clothes the Son with life.
4 A new cre - a - tion comes to life and grows



Em - braced by death, he broke its fear - ful hold,
Re - born, we share with him an Eas - ter life,
The Spir - it's fis - sion shakes the church of God.
as Christ's new bod - y takes on flesh and blood.



and our de - spair he turned to blaz - ing joy.
as liv - ing mem - bers of our Sav - ior Christ.
Bap - tized, we live with God the Three in One.
The u - ni - verse re - stored and whole will sing:



Hal - le - lu - jah!

Text: John B. Geyer, b. 1932
Music: ENGELBERG, Charles V. Stanford, 1852-1924
Text © John B. Geyer.

LIVING WATER

Living Water
Lutheran Church



Purpose Statement: "To Be and Make Disciples of Jesus Christ."

The Living Water
QR code for giving:



Living Water is a congregation of the
Evangelical Lutheran Church in America,
Grand Canyon Synod and
Northeast Valley Conference.

Ministers: All the members of Living Water

Pastor: Mark Rossman
PastorMark@lwlcaz.org

Pastor: Shari Bernau
PastorShari@lwlcaz.org

Office/Communications Manager: Jennifer Kelsh
jkelsh@lwlcaz.org

Finance Manager: Stephanie McLean
smclean@lwlcaz.org

Director of Music: Christina Hall
chall@lwlcaz.org

Associate Director of Music: Scott Sims
ssims@lwlcaz.org

In case of Pastoral Emergency, please call Pastor Mark at 973-699-7777 (mobile)

Publication Deadlines:
Connections- Every Tuesday by noon
SPLASH! - The 20th of each month by noon

