



November 24, 2024
GENEROSITY SUNDAY

Wishing all a



Thanksgiving Worship Service

on Tuesday **November 26th**

at **6:00 pm**

Sunday Worship Service is at 10:00am
on-site and online

Weekly CONNECTIONS Deadline—*Tuesdays at NOON*



We Remember in Our Prayers

- Charlie Boyd—Health Concerns
- Eric Brash—Health Concerns
- Barbara Brooks—Health Concerns
- Lizzy Caddow (Friend of Diane Salinas)—Cancer
- Christi (Daughter of Charlie and Sue Boyd)—Health Concerns
- Angelika Dumpf (Wife of Brett Stone)—Health Concerns
- Jenna Fjeld—Health Concerns
- Dave and Joy Gallimore—Health Concerns
- Frank Gasparino—Health Concerns
- Carol Gasser—Health Concerns
- Vicki Grimsley (Mother of Mason Rossman)—Cancer
- Tyler Hornacek (Grandson of John and Sue Hornacek)—Life Concerns
- Dick Johnston—Health Concerns
- Kristin Klarkowski—Health Concerns
- Tom Kelland—Health Concerns
- Michael Koch (Grandson of Ron & Shirley Koch)—Health Concerns
- Gabriele Laudenschlager—Health Concerns
- Merle (Karen Roessler's Sister)—Health Concerns
- Prentice Powers (Marty Lindert's brother)—Health Concerns
- Rebecca (Melissa Freesh's sister)—Health Concerns
- Bonnie Roberts—Life Concerns
- Kathie Roegnik—Health Concerns
- Ruth Schlesinger—Health Concern
- Bob Ulland—Health Concerns
- Michael Umland (Son of Steve & Sue Umland)—Health Concerns
- Peter Vasiliades (Nephew of Rick Sherrin)—Health Concerns
- Don Martin (Friend of Ron and Karen Roessler)—Health Concerns
- Suzanne Wagner—Health Concerns
- Del Rogge—Health Concerns
- Jeff & Eric Bembry (friends of Diane vanMaanen)—Health Concerns
- Pastor Michael Dubsy (friend of Frances DeBruyn)—Health Concerns

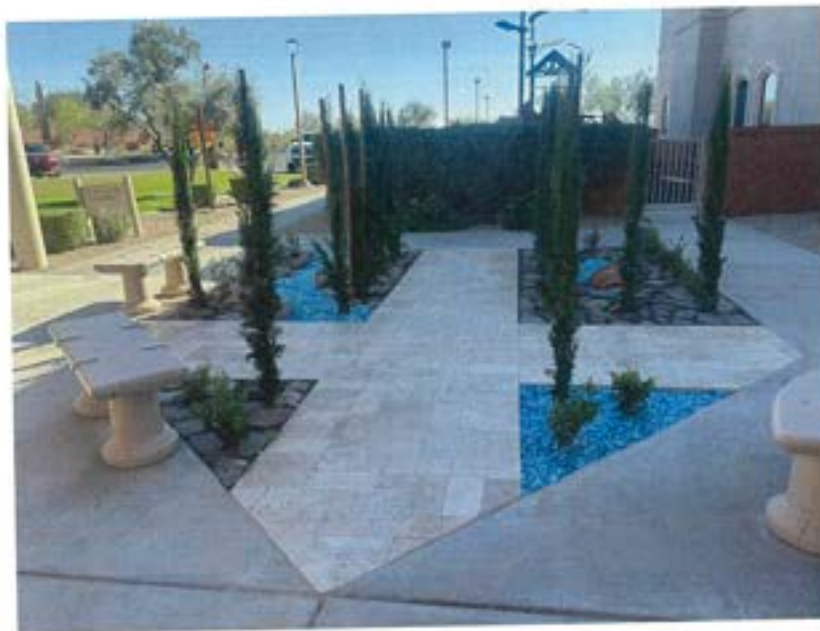
Send your prayer requests to prayer@lwlcaz.org or fill out a card in the Narthex.

**If it is time to remove someone from the prayer list, please contact the front office.*

MEDITATION PRAYER GARDEN

The new Meditation Prayer Garden in memory of
Leland M. Stenehjem Jr.
is near completion.

There will be a dedication immediately after the
Sunday Worship Service on December 1st.



Prayer of the week

Almighty God, your sovereign purpose brings salvation to birth. Give us faith to be steadfast amid the tumults of this world, trusting that your kingdom comes and your will is done through your Son, Jesus Christ, our Savior and Lord.

Amen.

Men's Bible Breakfast

Will not be meeting this week
See you next Thursday.

Dennis Nelson Bible Study

Studies available on YouTube each **Wednesday**

Weekly, published on our YouTube Channel

Wednesdays at NOON

*Bible Study Outlines available on
our website: **lwlc.org***

**This week's altar flowers were
donated by Darryl vanMaanen**



**In thanksgiving, memory and honor of
Ada Bembry and Garrett Beck**

Family Sunday School returns this fall with the



curriculum entitled "Simply Loved." We will be exploring a Jesus-centered journey through God's story of Love. Our fall semester will focus on one simple Bible Point and Bible Verse:

*Bible Point - "Jesus helps people in need."

*Bible Verse - "Give all your worries and cares to God for he cares about you." (1 Peter 5:7)



- **Sunday, November 24, 9:00am –ADVENT FAIR!**
- **Sunday, December 8, 9:00am – Jesus Feeds People**

We will meet in the Matthew/Mark classrooms in the Education Building. All families with children ages two through sixth grade are welcome to participate.



ELCA GOOD GIFTS

The Evangelical Lutheran Church in America (ELCA) is a church that is called to do God's work in the world, Together as the ELCA, we do more than we could ever do alone: grow our congregations, inspire new leaders and care for those around the world who live with hunger and poverty. ELCA Good Gifts are a creative way to do just that.

Your gifts go beyond your regular congregational offering to support the ministries of the ELCA that mean the most to you and your loved ones. Each ELCA Good Gift changes at least three lives: the life of the person helped by you gift, the life of your friend or loved one, and your own.

CATALOGS, GIFT CARDS, STICKERS, COIN BOXES, IDEAS will all be available every Sunday during Advent. Now is the time to grab your holiday shopping list and browse the new ELCA Good Gifts catalog, Each of these gifts has the remarkable capacity to transform lives...all in God's name.



Thank you for your generosity. Your generosity makes a difference and is helping change lives. Thank you for believing in the mission of Living Water and helping us to continue our ministry.

If you are looking for an easy way to give a financial gift via your phone, see QR code below to access Living Water's online giving platform.



*Thank
You*



JOIN US TO MAKE LEFSE IN DECEMBER

Joan Sprinkle has again graciously offered her home in NE Scottsdale, and we'll provide hands-on instructions for rolling and frying Lefse (lef'-suh), a Norwegian

flatbread made from potatoes, butter & cream, and flour, traditionally made during the holidays. We can accommodate 10 persons per session so everyone can have a "hands-on" experience. **Sunday, December 8 at 2 pm and Monday, December 9, at 2 pm.** Reserve your spot on the sign-up sheet in the church entryway or by contacting the Ullands (myrna.ulland@gmail.com) or Joan Sprinkle (joansprinkle@cox.net) today!

November is Women of the ELCA's "Thankoffering"



Women of the ELCA (WELCA) is the women's ministry organization of the ELCA and at Living Water Lutheran Church, we have an active WELCA unit. We call ourselves Living Water Lutheran Church Women (LWLCW). If you're a woman from Living Water and involved in any aspect of ministry, you are a participant in WELCA .

Why an annual Thankoffering? For more than 100 years, Lutheran women have given thanks to God and dollars to mission through "thankofferings." The Thankoffering is a tradition dating back to the 1800s, when Christian women formed "mite" or "cent" societies to support local and international missions. When Women of the ELCA formed in 1987, we committed to continue this tradition of giving in gratitude for blessings. Each year, in thousands of churches where women are involved in unique aspects of ministry, Thankofferings are collected to support the life-changing ministries of the churchwide Women of the ELCA.

A special Thankoffering envelope will be available at the Tuesday Women's Bible study and in the gathering space (narthex) of the church, through the end of November. If you're writing a check, make it payable to either Living Water Lutheran Church or Women of the ELCA and note "Thankoffering" in the memo. Thankofferings of any amount are encouraged. Together, we can do more than we could ever do apart.

With appreciation from your churchwide president of Women of the ELCA,

Myrna Wells-Ulland



Annual Tamale Sale

Our amigas at La Sagrada Familia are offering their fabulous homemade tamales for sale again this year!

This year the choices will include red chili with meat, green chili with chicken, and tamales with cheese. They will be priced at \$30/dozen or \$15/half dozen. A sign up sheet will be available at church on Sundays beginning today through the first two Sundays in December, or you may email your order with the quantity of each variety that you want to Kristin Smith at kaos_52@me.com.

Tamales will be available to pick up on Sunday, December 22.



SUNDAY MORNING ADULT FORUM

DAVID – A MAN AFTER GOD'S OWN HEART
SUNDAY MORNING ADULT FORUM
DECEMBER 1 and 15 at 9:00 AM

in the Music/Choir Room

I believe that the greatest moments of David's life were (1) the day that he was chosen by God and anointed to be the next king and (2) the day that God told him that through his descendant his throne would be established forever. What have been the greatest moments of your life? What does it mean to you to know that (1) you are chosen by God and (2) what you do for God will last into eternity?

Did you know?

We have Eucharistic Ministers who are trained and available to bring communion to those who are homebound. Please contact Pastor Shari (pastorshari@lwcaz.org) or Diane Sellers (pgsellers1@gmail.com) if you, or someone you know, would like to receive communion at home.



And so we know and rely on the love God has for us. God is love. Whoever lives in love lives in God, and God in them. 1 John 4:16

Piecemakers Quilting

Adjusted Schedule for November

Join us!



Come and tie quilts with us! Our quilting primarily supports Lutheran World Relief (LWR), and we also make quilts for refugee families and our high school graduates. We have adjusted our November schedule due to the election the first week of November.

We meet from 9 am to about noon, in the Education Building on the first floor on November 20. Bring your own water or coffee for a mid-morning break. If you're a winter visitor who likes to quilt, come and tie with us. If you like to sew, we can provide pre-cut squares to make quilt tops. Many hands make light work! Questions? Ask Lynda Cales, Kay Bonar, Mary Nyberg, Cindy Ophaug or Myrna Ulland. Learn more about this ministry at www.lwr.org





La Sagrada Familia Lutheran Food Shelf Needs Our Help!!

Your support of non-perishable food items for our neighbors at La Sagra Familia in northern Phoenix is appreciated and there is a continuing need. Items needed most frequently are noted on the

shopping list in the grocery cart that is set out each Sunday morning. They are also listed below. For the safety of our friends at La Sagrada, please do not donate expired or "close-to" date items. When dropping off our donated food recently, it was noted the shelves were very bare, so please continue to be generous in remembering our neighbors in need.

Emergency Food Bank List

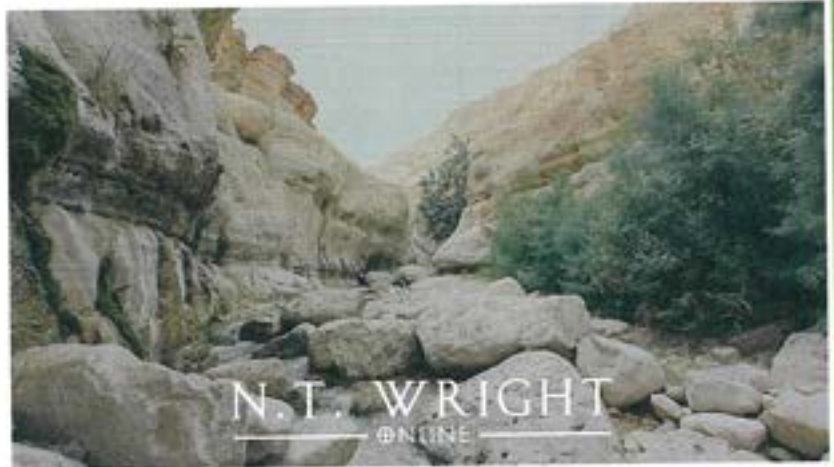
Rice, Dried Beans, Tomato Sauce, Canned Tomatoes, Cooking Oil, Pasta Shells, Peanut Butter, Sugar, Maseca Flour (for tortillas), Canned Corn, Instant Coffee, Powdered Creamer, Diapers and Baby Wipes, Knorr Powdered Chicken Broth

*NO SOUPS, PLEASE



TUESDAY WOMEN BIBLE STUDY

We have returned to a favorite New Testament scholar, Professor N.T. Wright, to take a deep dive into the Gospel of Matthew. This material will nearly fill up our schedule until Spring of 2025. We'll look at the structure and artistry of Matthew, how Matthew presents Jesus as God with us, authoritative over heaven and earth.



We'll trace themes of Jesus' authority throughout the Gospel, consider how to apply the new way of life as Jesus describes it, and discover faith as the appropriate human response to Jesus' message.

Our Tuesday Women's Bible study is open to all women. Bring a friend! You don't need to be Lutheran! This study includes some video and we always have some meditative music and prayer. You don't need to purchase any material. Just bring your favorite Bible translation and connect with us for about 90 minutes each Tuesday morning, in-person or via Zoom. Coffee and hot water for tea/hot chocolate are provided. Occasionally we also have a treat!

The Zoom link is always provided in advance. If you aren't on our email distribution list, please contact myrna.ulland@gmail.com to get our Tuesday Women messages.

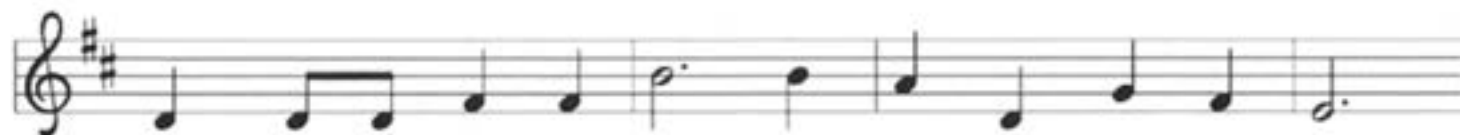
*Note: We will not be meeting this week on November 26th.
Our next meeting is Tuesday, December 3rd.*

THANK YOU BLOOD DONORS!

Thank you to all who donated blood at last week's blood drive! The Red Cross is so grateful for this sacrifice. The recent hurricanes and flooding have caused a significant shortage of blood. We collected 27 pints of blood, which was 2 pints higher than our goal.

Stay tuned for information about a future drive toward the end of February. Our location is one that the Red Cross would like to sustain, and it is a great opportunity for us to be of service.

Gathering Hymn... "Crown Him With Many Crowns"



1 Crown him with man - y crowns, the Lamb up - on his throne;
4 Crown him the Lord of life, who tri - umphed o'er the grave
5 Crown him the Lord of years, the po - ten - tate of time,



hark, how the heav'n-ly an - them drowns all mu - sic but its own.
and rose vic - to - rious in the strife for those he came to save,
cre - a - tor of the roll - ing spheres, in - ef - fab - ly sub - lime.



A - wake, my soul, and sing of him who died for thee,
His glo - ries now we sing, who died and rose on high,
All hail, Re - deem - er, hail! For thou hast died for me;




and hail him as thy match-less king through all e - ter - ni - ty,
who died, e - ter - nal life to bring, and lives that death may die,
thy praise and glo - ry shall not fail through-out e - ter - ni - ty.

Text: Matthew Bridges, 1800-1894, sts. 1-3, 5; Godfrey Thring, 1823-1903, st. 4

Music: DIADEMATA, George J. Elvey, 1816-1893



PSALM 93



The Lord is king; [the Lord is king;]
he is robed in maj - es - ty.

The image shows two staves of musical notation in 6/8 time. The first staff contains the lyrics 'The Lord is king; [the Lord is king;]' with a repeat sign. The second staff contains the lyrics 'he is robed in maj - es - ty.' The music consists of quarter and eighth notes.

1 The Lord is king, in splendor robed; robed is the Lord and girt about with strength

1-2 And he has made the world firm, not to be moved. Your throne stands from of old; from everlasting you are, O Lord.

5 Your decrees are worthy of trust indeed; holiness befits your house, O Lord, for length of days



Sermon Hymn... "The Head that Once Was Crowned"



- 1 The head that once was crowned with thorns is crowned with glo - ry now;
- 2 The high - est place that heav'n af - fords is his by sov-'reign right,
- 3 The joy of all who dwell a - bove, the joy of all be - low
- 4 To them the cross, with all its shame, with all its grace, is giv'n;



a roy - al di - a - dem a - dorns the might - y vic - tor's brow.
the King of kings, and Lord of lords, and heav'n's e - ter - nal light.
to whom he man - i - fests his love, and grants his name to know;
their name, an ev - er - last - ing name, their joy, the joy of heav'n.

Text: Thomas Kelly, 1769-1855

Music: ST. MAGNUS, Jeremiah Clarke, 1669-1707

Sending Song... "Lift High the Cross"



Lift high the cross, the love of Christ pro - claim till



all the world a - dore his sa - cred name.



1 Come, Chris - tians, fol - low where our cap - tain trod,
2 All new - born ser - vants of the Cru - ci - fied
3 O Lord, once lift - ed on the glo - rious tree,
4 So shall our song of tri - umph ev - er be:

Refrain



our king vic - to - rious, Christ, the Son of God.
bear on their brows the seal of him who died.
as thou hast prom - ised, draw us all to thee.
praise to the Cru - ci - fied for vic - to - ry!

Text: George W. Kitchin, 1827-1912; rev. Michael R. Newbolt, 1874-1956

Music: CRUCIFER, Sydney H. Nicholson, 1875-1947

Text and music © 1974 Hope Publishing Company, Carol Stream, IL 60188. All rights reserved. Used by permission.



LIVING WATER

Living Water
Lutheran Church



Purpose Statement: "To Be and Make Disciples of Jesus Christ."

The Living Water
QR code for giving:



Living Water is a congregation of the
Evangelical Lutheran Church in America,
Grand Canyon Synod and
Northeast Valley Conference.

Ministers: All the members of Living Water

Pastor: Mark Rossman
PastorMark@lwlcaz.org

Pastor: Shari Bernau
PastorShari@lwlcaz.org



Office/Communications Manager: Jennifer Kelsh
jkelsh@lwlcaz.org

Finance Manager: Stephanie McLean
smclean@lwlcaz.org

Director of Music: Christina Hall
chall@lwlcaz.org

Associate Director of Music: Scott Sims
ssims@lwlcaz.org

In case of Pastoral Emergency, please call Pastor Mark at 973-699-7777 (mobile)

Publication Deadlines:
Connections- Every Tuesday by noon
SPLASH! - The 20th of each month by noon

Living Water Lutheran Church
9201 E. Happy Valley Rd, Scottsdale, AZ 85255
office@lwlcaz.org ~ www.LWLCAZ.org
~ 480.473.8400 ~