

CONNECTIONS

Living Water
Lutheran Church



August 25, 2024

KIND WORDS
are like
HONEY,
sweet
to the
SOUL



Proverbs 16:24

Sunday Worship Service is at 10:00am
on-site and online

Weekly CONNECTIONS Deadline—*Tuesdays at NOON*



We Remember in Our Prayers

- Charlie Boyd—Health Concerns
- Eric Brash—Health Concerns
- Barbara Brooks—Health Concerns
- Lizzy Caddow (Friend of Diane Salinas)—Cancer
- Christi (Daughter of Charlie and Sue Boyd)—Health Concerns
- Virginia Conrad—Health Concerns
- Angelika Dumpf (Wife of Brett Stone)—Health Concerns
- Jenna Fjeld—Health Concerns
- Dave and Joy Gallimore—Health Concerns
- Frank Gasparino—Health Concerns
- John Goesling—Health Concerns
- Vicki Grimsley (Mother of Mason Rossman)—Cancer
- Tyler Hornacek (Grandson of John and Sue Hornacek)—Life Concerns
- Kristin Klarkowski—Health Concerns
- Tom Kelland—Health Concerns
- Michael Koch (Grandson of Ron & Shirley Koch)—Health Concerns
- Gabriele Laudenschlager—Health Concerns
- Merle (Karen Roessler's Sister)—Health Concerns
- Terri Powell (Friends of Bonnie and Tod Dawson)—Battling Cancer
- Prentice Powers (Marty Lindert's brother)—Health Concerns
- Rebecca (Melissa Freesh's sister)—Health Concerns
- Bonnie Roberts—Life Concerns
- Kathie Roegnik—Hip Surgery Recovery
- Ruth Schlesinger—Health Concern
- Bob Ulland—Health Concerns
- Michael Umland (Son of Steve & Sue Umland)—Health Concerns
- Peter Vasiliades (Nephew of Rick Sherrin)—Health Concerns
- Friends and Family of Sandy Kohlway (Friend of Frances DeBruyn)

Send your prayer requests to prayer@lwlcw.org or fill out a card in the Narthex.

**If it is time to remove someone from the prayer list, please contact the front office.*

Prayer of the Week

Ever-loving God, your Son gives himself as living bread for the life of the world. Fill us with such a knowledge of his presence that we may be strengthened and sustained by his risen life to serve you continually, through Jesus Christ, our Savior and Lord.

Amen.

Men's Bible Breakfast

We meet on Thursdays at 8:00am

Spirit in the Desert Retreat Center

7415 East Elbow Bend Rd.

Carefree, AZ 85377

If interested in carpooling, please contact

Wayne Burrus



\$7 for breakfast

Dennis Nelson Bible Study

Note: The Dennis Nelson Bible Study will be on a three month break for summer starting in June and will resume again in September.

Piecemakers Quilting

September 4 and 18, 2024



Come and tie quilts with us! Our quilting primarily supports Lutheran World Relief (LWR), and we also make quilts for refugee families and our high school graduates. We meet on the first and third Wednesdays of the month, from 9 am to about noon, in the Education Building on the first floor. Bring your own water or coffee for a mid-morning break. If you're a winter visitor who likes to quilt, come and tie with us. If you like to sew, we can provide pre-cut squares to make quilt tops. Many hands make light work! Questions? Ask Lynda Cales, Kay Bonar, Mary Nyberg, Cindy Ophaug or Myrna Ulland. Learn more about this ministry at www.lwr.org

Thank you for your generosity. Your generosity makes a difference and is helping change lives. Thank you for believing in the mission of Living Water and helping us to continue our ministry.

If you are looking for an easy way to give a financial gift via your phone, see QR code below to access Living Water's online giving platform.



*Thank
You*



Gods work. Our Hands September 8, 2024

This year Living Water will be one of 8,700 ELCA congregations participating in “**God’s work. Our Hands**” on September 8th. This year for our service project we will provide school backpacks to children around the world through the Lutheran World Relief “School Kit” program.

Across the country, thousands of ELCA members will engage in service work to make positive changes in the community and in the world, build and deepen relationships and share God’s Love. Please join us as we do God’s work with our hands!

The backpacks will be donated by one of our members. We have applied for a Thrivent Action Team Grant to purchase additional items needed to fill each backpack. A collection bin is in the church entryway. You may bring your items (**listed below**) on or before Sunday, September 8th. If you would prefer us to shop for you, please make a donation to Living Water Lutheran Church and note GWOH on the memo line.

Questions? contact Debbie Anderson (debbiea@elitemail.org) or Sue Umland (sueumland@gmail.com)

We will join after the worship service on September 8th to fill the bags.

Here is what is needed to fill each backpack. Feel free to donate any quantity of any of these items. Please do not donate anything other than what is on the list below:

Four - 70 sheet notebooks (wide or college ruled paper) No loose-leaf paper.

One - 30-centimeter ruler (or a ruler with centimeters on one side and inches on the other)

One – Pencil sharpener

One – Pair blunt scissors (safety scissors with embedded steel blades work well)

Five – Unsharpened number 2 pencils with erasers. Secure with rubber band

Five - Black or blue ballpoint pends (no gel ink) Secure with rubber band.

One- Box of 16 or 24 crayons

One – 2 ½ inch eraser



La Sagrada Familia Lutheran Food Shelf Needs Our Help!!

Your support of non-perishable food items for our neighbors at La Sagra Familia in northern Phoenix is appreciated and there is a continuing need. Items needed most frequently are noted on the

shopping list in the grocery cart that is set out each Sunday morning. They are also listed below. For the safety of our friends at La Sagrada, please do not donate expired or “close-to” date items. When dropping off our donated food recently, it was noted the shelves were very bare, so please continue to be generous in remembering our neighbors in need.

Emergency Food Bank List

Rice, Dried Beans, Tomato Sauce, Canned Tomatoes, Cooking Oil, Pasta Shells, Peanut Butter, Sugar, Maseca Flour (for tortillas), Canned Corn, Instant Coffee, Powdered Creamer, Diapers and Baby Wipes, Knorr Powdered Chicken Broth

***NO SOUPS, PLEASE**

September Boldcafe Monthly Dinner: Starting over

Join us for our next Boldcafe Monthly Dinner (B. Y. O. D.) via Zoom,
Thursday, September 5, at 7:00pm CDT.

The Rev. Meredith Harber will lead our conversation on the topic of starting over.
Participants are encouraged to bring their friends!

Please use the link below to register and be sure to pass this invitation along!
<https://boldcafe.org/dinner>

Do you know about WELCA events?
Check out our calendar and see how you can [get involved!](#)

Living Water's "Hunger Jar"



The large Hunger Jar is located in the sanctuary during services, to the right of the water fountain. Offerings placed in the Hunger Jar are typically distributed 50/50 between local and international/global organizations or initiatives.

The Service and Caring Team Ministry at LWLC periodically determines how to distribute offerings to the Hunger Jar. Most recently, we split the 06/30/24 balance of \$2,611.50 between St. Mary's Food Bank of Arizona and ELCA World Hunger. Each received \$1,305.75.

You are invited to make an offering to the Hunger Jar while the offering is being collected during the worship service. While the jar's tag line says, "Change for Change", your offering can be coins, bills, and even checks. And, if you prefer, you can donate through LWLC's online donation option and indicate "Hunger Jar".

From time to time, you may also see smaller Hunger Jar collection jars elsewhere in the church as we gather for worship. Each offering placed in the Hunger Jar is a reminder that our hungry neighbors, near and far, benefit from our generosity. Thank you!



IN MEMORY & HONOR
OF
DAVID GARRETT BECK
WE ARE HOSTING OUR
5TH ANNUAL

Thank you for your
Support!
IT MAKES A
DIFFERENCE!



CLOTHING & DONATION DRIVE



AUGUST 2ND - SEPTEMBER 7TH

ALL DONATIONS WILL GO TO
~ GRACE LUTHERAN CHURCH ~
WHO THEN SHARE THE ITEMS
WITH THE LESS FORTUNATE.

CALL OR TEXT ME @ 408-314-6671 & WE CAN A
ARRANGE TO PICK ITEMS UP, OR GET INFORMATION
ON WHERE THEY CAN BE DROPPED OFF
OR SHIPPED

WE ARE IN NEED OF THE FOLLOWING ITEMS:
GENTLY USED MEN & WOMEN'S CLOTHING,
SOCKS, UNDERWEAR,
TRAVEL SIZE TOILETRIES,
BLANKETS, COATS, HOODIES, FOOTWEAR
THANK YOU FOR YOUR GENEROSITY!

For questions contact, Diane at 408-314-6671 or email dvan922@icloud.com



Heat Respite—Lunch Pack Program

The summer heat is unbearable and the homeless on our streets face heightened health risks due to the extreme heat. You can help, and our impact is stronger when we collaborate together! Thanks to all five of our Northeast Valley Consortium Churches, we are able to provide 10 lunches throughout this summer to be delivered to the Heat Respite Program for homeless at Grace Lutheran in downtown Phoenix. Our congregation, Living Water, has signed up for two of those lunches, and we just need some hands to help put things together. Please talk to Pastor Shari or Deb Bash if you would like to help.



Lunches include a ham and cheese sandwich, mustard packet, granola bar, fresh veggies, chips, napkin, and a pre-printed note card for the recipient. Thanks to the generosity of the people of Ascension Lutheran, all of these supplies will be provided. We just need some hands to help put things together.



The mission of the Grace Lutheran Heat Respite program is to provide a space for heat relief during the summer months while building community through the sharing of community resources, meals, water, and ourselves in a place of being, belonging, and becoming.

Confirmation



Starting September 8...

Confirmation classes for students in grades 6-8 will be held two Sundays each month from 6:30-8:00pm.

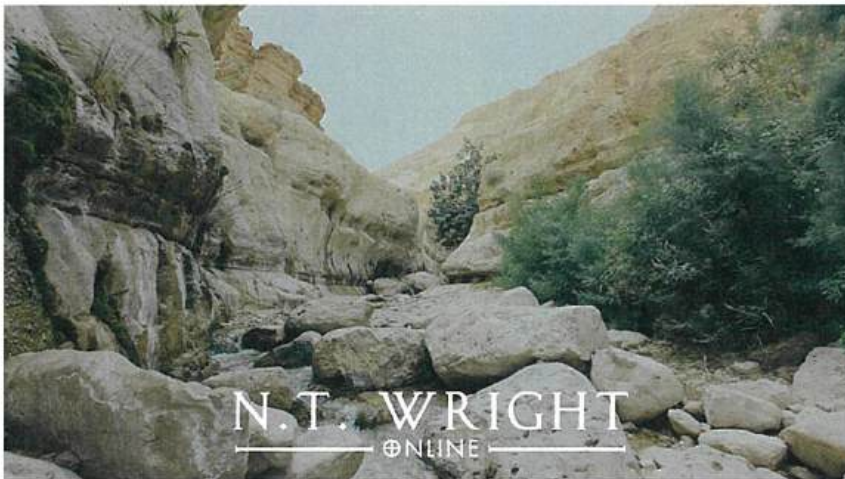
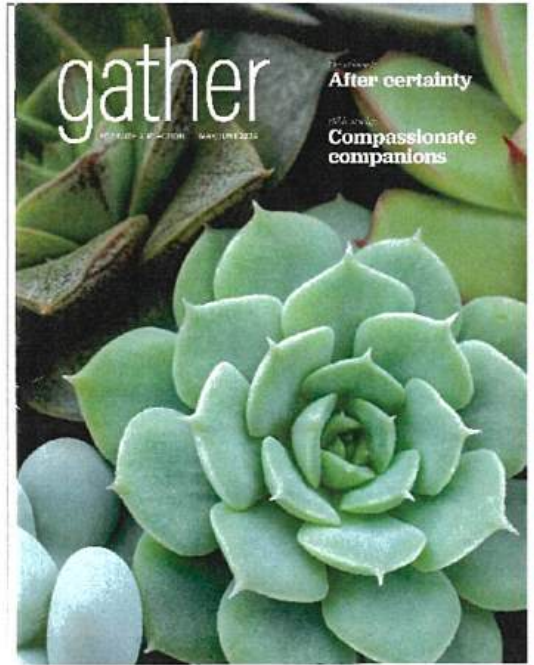
This is a two and a half-year program, and we will be learning about the Old Testament, New Testament, Lutheran History and Catechism and Lutheran Living. So far, we have five students who are registered to attend the class, and we look forward to a fun and relationship-building learning environment!

Please let Pastor Shari pastorshari@lwlcaz.org know if you (or someone you know) are interested in joining the class.

notes:

Tuesday Women's Bible Study Returns

Join us beginning Tuesday, Sept. 10, when we resume our regular Tuesday morning in-person and virtual Zoom connection Bible study at 10 am in the Fellowship Hall. We will begin with the 3-session study on *After Certainty* from the Gather magazine summer issues, May/June and July/August. This study was written by ELCA pastor and now Bishop of the Rocky Mountain Synod, Rev. Dr. Meghan Johnston Aelabouni. Drawing from Biblical texts and Lutheran tradition, we'll ponder what it means to live faithfully in times of uncertainty. And we'll see how God leads us beyond certainty to curiosity, community and compassion. Study material will be provided if you don't have your copies of the Gather magazine. (This is the study we attempted to do at Spirit in the Desert Retreat Center on July 23 before Myrna got delayed trying to get out of New Orleans after the Youth Gathering!)



Then, beginning on October 1, we are going to return to a favorite New Testament scholar, N.T. Wright, to take a deep dive into the Gospel of Matthew. This material will nearly fill up our schedule until Spring of 2025. We'll look at the structure and artistry of Matthew, how Matthew presents Jesus as God with us, authoritative over heaven and earth.

We'll trace themes of Jesus' authority throughout the Gospel, consider how to apply the new way of life as Jesus describes it, and discover faith as the appropriate human response to Jesus' message.

Both studies include some video, and we always include some meditative music and prayer. You don't need to purchase any material. Just bring your favorite Bible translation and connect with us for about 90 minutes each Tuesday morning. Coffee and hot water for tea/hot chocolate are provided. Occasionally we also have a treat! If you aren't on our email distribution list, please contact myrna.ulland@gmail.com to get our Tuesday Women messages. The Zoom link is always provided in advance.

Gathering Hymn..... "Lead On, O King Eternal"



1 Lead on, O King e - ter - nal! The day of march has come;
2 Lead on, O King e - ter - nal, till sin's fierce war shall cease,
3 Lead on, O King e - ter - nal: we fol - low, not with fears,



hence-forth in fields of con - quest your tents will be our home.
and ho - li - ness shall whis - per the sweet a - men of peace;
for glad-ness breaks like morn - ing wher - e'er your face ap - pears.



Through days of prep - a - ra - tion your grace has made us strong;
for not with swords loud clash - ing, nor roll of stir-ring drums,
Your cross is lift - ed o'er us; we jour - ney in its light;



and now, O King e - ter - nal, we lift our bat - tle song.
but deeds of love and mer - cy the heav'n - ly king - dom comes.
the crown a - waits the con - quest; lead on, O God of might!

Text: Ernest W. Shurtleff, 1862-1917
Music: LANCASHIRE, Henry T. Smart, 1813-1879



Psalm 34:15-22



Taste _____ and see _ the good-ness of _ the Lord.



Taste _____ and see _ the good-ness of _ the Lord.

- 15 The eyes of the Lord are on the righteous,
and his ears are attentive to their cry;
16 but the face of the Lord is against those who do evil,
to blot out their name from the earth.
- 17 The righteous cry out, and the Lord hears them;
he delivers them from all their troubles.
18 The Lord is close to the brokenhearted
and saves those who are crushed in spirit.
- 19 The righteous person may have many troubles,
but the Lord delivers him from them all;
20 he protects all his bones,
not one of them will be broken.

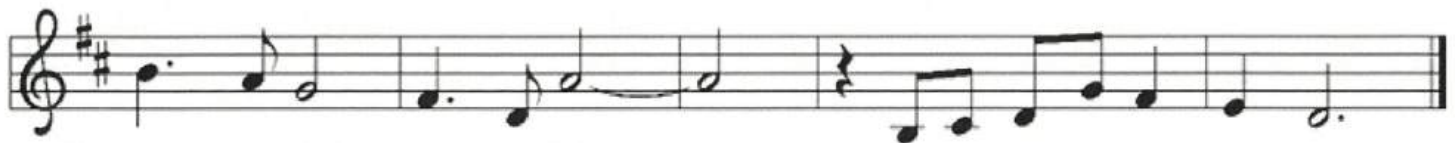


Taste AND See
that the
LORD IS GOOD.

Sermon Hymn... "By Your Hand You Feed Your People"



Eat this bread, drink this cup. Taste and see the good-ness of God.



Bread of life, cup of love, we re-joice in your pres-ence.



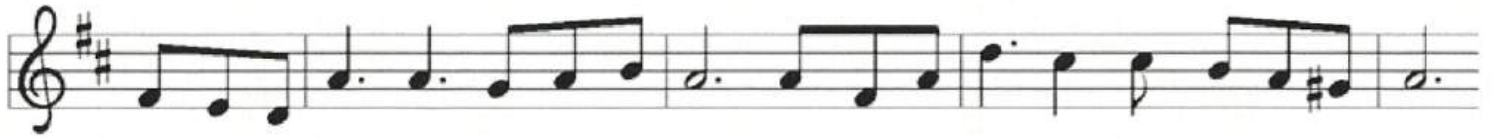
- 1 I will bless the Lord at all times, praise with heart and voice;
- 2 Look up - on the Lord, be ra - dant, nev - er turn a - way.
- 3 An - gels fold their wings a - round us, guard through good and ill.
- 4 Saints of God, bow down and wor - ship, bless the ho - ly name.



in my God I glo - ry for - ev - er: lis - ten and re - joice!
God will save in ev - 'ry af - flic - tion, hear us when we pray.
Those who seek the Lord will lack noth - ing; taste, and have your fill.
Rise to tell God's great - ness for - ev - er, won - drous deeds pro - claim!

Text: Jeremy Young, b. 1948, refrain; *With One Voice*, stanzas, based on Ps. 34
Music: STONERIDGE, Jeremy Young
Text and music © 1995 Augsburg Fortress.

Sending Song... "I Am The Bread Of Life"



- 1 Bless-ed as-sur-ance, Je-sus is mine! Oh, what a fore-taste of glo-ry di-vine!
- 2 Per-fect sub-mis-sion, per-fect de-light, vi-sions of rap-ture now burst on my sight;
- 3 Per-fect sub-mis-sion, all is at rest; I in my Sav-ior am hap-py and blest,



Heir of sal-va-tion, pur-chase of God, born of his Spir-it, washed in his blood
an-gels de-scend-ing bring from a-bove ech-oes of mer-cy, whis-pers of love.
watch-ing and wait-ing, look-ing a-bove, filled with his good-ness, lost in his love.

Refrain



This is my sto-ry, this is my song, prais-ing my Sav-ior all the day long:



this is my sto-ry, this is my song, prais-ing my Sav-ior all the day long.

Text: Fanny J. Crosby, 1820-1915

Music: ASSURANCE, Phoebe P. Knapp, 1830-1908

LIVING WATER

Living Water
Lutheran Church



Purpose Statement: "To Be and Make Disciples of Jesus Christ."

The Living Water
QR code for giving:



Living Water is a congregation of the
Evangelical Lutheran Church in America,
Grand Canyon Synod and
Northeast Valley Conference.

Ministers: All the members of Living Water

Pastor: Mark Rossman
PastorMark@lwlcaz.org

Pastor: Shari Bernau
PastorShari@lwlcaz.org



Office/Communications Manager: Jennifer Kelsh
jkelsh@lwlcaz.org

Finance Manager: Stephanie McLean
smclean@lwlcaz.org

Director of Music: Christina Hall
chall@lwlcaz.org

Associate Director of Music: Scott Sims
ssims@lwlcaz.org

In case of Pastoral Emergency, please call Pastor Mark at 973-699-7777 (mobile)

Publication Deadlines:
Connections- Every Tuesday by noon
SPLASH! - The 20th of each month by noon

Living Water Lutheran Church
9201 E. Happy Valley Rd, Scottsdale, AZ 85255
office@lwlcaz.org ~ www.LWLCAZ.org
~ 480.473.8400 ~